



Barbara Jean
· OUTDOOR ·
FIRE COLLECTION

PRODUCT GUIDE



FP2085NT
Round Outdoor Gas Fire Pit (Natural Gas)
MLR1410 Lava Rocks
FPB30SGT Smooth Grey Fire Bowl

Wouldn't it be great if summer lasted forever?

Linger longer with Barbara Jean

Now you can enjoy more outdoor living at your home or cottage with the new outdoor fire collection from Barbara Jean.

The Barbara Jean collection features an array of customizable burners, fire stands, tables and fireplaces that allow you to create an enticing ambiance for cocktail hour and al fresco dining on your patio or deck.

Special times just got a whole lot warmer with the beauty of the new Barbara Jean Collection. Come see it today!





B



C

A

OLT48BMAPT
Outdoor Fire Table (48" Burner)
Black with Brown Accents
Bronze Glass Media
Weather Cover and Wind Guard

Optional Accessories:
MQRBD3 Driftwood (5 pc set)
MQSTONE10 Decorative Stones (10 pc set)

B

OFS48MAPT
Fire Stand with Linear Burner (Manual/Propane)
MQG5C Glass Media (Bronze x4)
OB48WG Wind Guard

C

OFF7972S2N
Outdoor Linear Fireplace
(See Through – Natural Gas/Millivolt)
MQG5C Glass Media (Bronze x6)

A

Fire Tables

Imagine family and friends gathered around a mesmerizing ribbon of fire on the Barbara Jean Fire Table. Available in three sizes and two colour options, you can create your own designer look with your choice of ember glass, driftwood logs, decorative stones and rocks.



A

OLT48GMAPT

Outdoor Fire Table (48" Propane Burner)
Black with Gray Accents
Bronze Glass Media
Weather Cover and Wind Guard

Optional Accessories:

MQRBD3 Driftwood (5 pc set)
MQSTONE10 Decorative Stones (10 pc set)

B + C

OLT48BMAPT

Outdoor Fire Table (48" Propane Burner)
Black with Brown Accents
Bronze Glass Media
Weather Cover and Wind Guard

Optional Accessories:

MQRBD3 Driftwood (5 pc set)
MQSTONE10 Decorative Stones (10 pc set)



B

C

Fire Tables



OLT48BMAPT
Outdoor Fire Table (48" Propane Burner)
Black with Brown Accents
Bronze Glass Media
Weather Cover and Wind Guard

Optional Accessories:
MQRBD3 Log Set (Driftwood 5 pc set)
MQSTONE10 Decorative Stones (10 pc set)

Fire Table Specifications

Certified for USA and Canada: Outdoor Decorative Gas Appliance.

Fire Tables are assembled – includes Wind Guard, Weather Cover and Bronze Glass Media.

Table Sizes

24"

OLT24GMAPT
Black (Grey trim)

OLT24BMAPT
Black (Brown trim)

Table Top (A x B)
28 5/16" x 42 13/16"

Table Base (C x D x E)
28 5/16" x 42 13/16"

36"

OLT36GMAPT
Black (Grey trim)

OLT36BMAPT
Black (Brown trim)

Table Top (A x B)
28 5/16" x 42 13/16"

Table Base (C x D x E)
28 5/16" x 42 13/16"

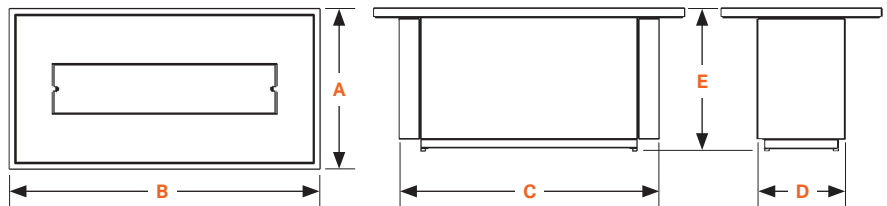
48"

OLT48GMAPT
Black w/ Grey trim

OLT48BMAPT
Black w/ Brown trim

Table Top (A x B)
28 5/16" x 42 13/16"

Table Base (C x D x E)
28 5/16" x 42 13/16"



Linear Burner 24"
Manual Valve
with Spark Igniter
Propane
41,000 BTU

Linear Burner 36"
Manual Valve
with Spark Igniter
Propane
60,000 BTU

Linear Burner 48"
Manual Valve
with Spark Igniter
Propane
60,500 BTU

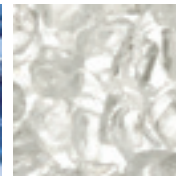
Manual Valve Systems are shipped as Propane, NG conversion orifice is included with burner.

Glass Media Options

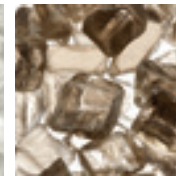
Tables include Bronze Glass. 5 lbs per foot of burner (ie: 24" burner = 10 lbs)



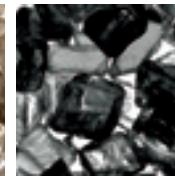
MQG5A
1/2" Cobalt Blue
5 lbs



MQG5W
1/2" White
5 lbs



MQG5C
1/2" Bronze
5 lbs

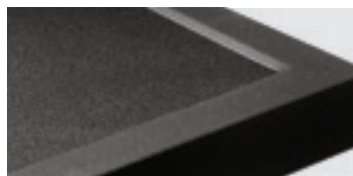


MQG5B
1/2" Black
5 lbs



MQG5ZG
Zircon Glacier Ice
5 lbs

Table Colour Options



Black with Grey trim



Black with Brown trim

Linear Burners

Completely flexible, the Barbara Jean Burner is the perfect project for do-it-yourselfers. Five sizes available (24, 36, 48, 72, 96") and for longer lengths simply link them together to create your own custom size!

Plus, a variety of beautiful log, decorative stone and rock options ensure you create the look you want. When you have achieved your desired look, invite family and friends to gather around for a perfect get together outdoors.



A

OB48MVN
Linear Burner (Millivolt/Natural Gas)
MQG5C Glass Media (Bronze x4)
MQSTONE Decorative Stones
OB48WG Wind Guard

B

OB48MVN
Linear Burner (Millivolt/Natural Gas)
MQG5C Glass Media (Bronze x4)
MQSTONE Decorative Stones

A



Linear Burners



OB72MVN
Linear Burner (Millivolt/Natural Gas)
MQG5C Glass Media (Bronze x6)
MQSTONE Decorative Stones

Linear Burner Specifications

Certified for USA and Canada: Outdoor Decorative Gas Appliance.

Burner Sizes

24"

OB24MVN/IPN
Linear Burner 24"
Millivolt/IPA PF2
Natural Gas
40,000 BTU

Propane Conversion

24OB-CKLP
Millivolt
24OB-CKLP2
IPI

OB24MAPT*
Manual Valve
with thermocouple
Propane
41,000 BTU

Dimensions (A x B)
26" x 7 1/2"

36"

OB36MVN/IPN
Linear Burner 36"
Millivolt/IPA PF2
Natural Gas
60,000 BTU

Propane Conversion

36OB-CKLP
Millivolt
36OB-CKLP2
IPI

OB36MAPT*
Manual Valve
with thermocouple
Propane
60,000 BTU

Dimensions (A x B)
38" x 7 1/2"

48"

OB48MVN/IPN
Linear Burner 48"
Millivolt/IPA PF2
Natural Gas
80,000 BTU

Propane Conversion

48OB-CKLP
Millivolt
48OB-CKLP2
IPI

OB48MAPT*
Manual Valve
with thermocouple
Propane
60,500 BTU

Dimensions (A x B)
50" x 7 1/2"

72"

OB72MVN
Linear Burner 72"
Millivolt Only
Natural Gas
120,000 BTU

Propane Conversion

72OB-CKLP
Millivolt

All burners are manufactured with Satin Coat steel with a high temperature black paint finish. Satin Coat steel is pretreated with a Zinc coating for corrosion resistance and paint adhesion.

Dimensions (A x B)
74" x 7 1/2"

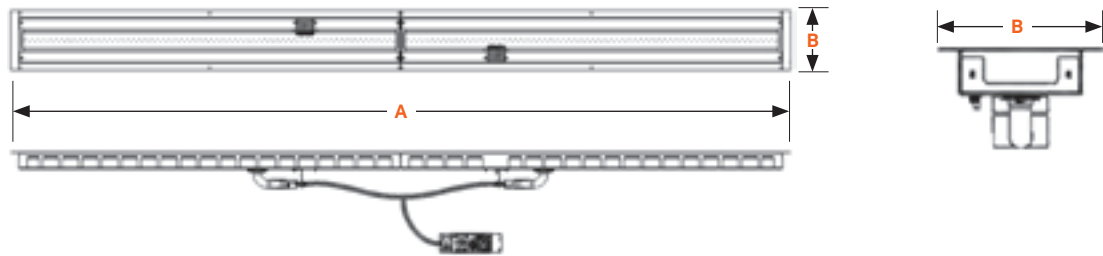
96"

OB96MVN
Linear Burner 96"
Millivolt Only
Natural Gas
156,000 BTU

Propane Conversion

96OB-CKLP
Millivolt

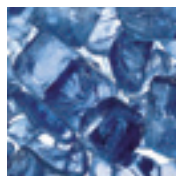
Dimensions (A x B)
98" x 7 1/2"



*Manual Valve Systems are shipped as Propane, NG conversion orifice is included with burner.

Glass Media Options

Tables include Bronze Glass. 5 lbs per foot of burner (ie: 24" burner = 10 lbs)



MQG5A
1/2" Cobalt Blue
5 lbs



MQG5W
1/2" White
5 lbs



MQG5C
1/2" Bronze
5 lbs



MQG5B
1/2" Black
5 lbs



MQG5ZG
Zircon Glacier Ice
5 lbs

Wind Guard Recommended



5 1/2" H (4 pc set)

OB24WG for 24" Burners OB24

OB36WG for 36" Burners OB36

OB48WG for 48" Burners OB48

OB72WG for 72" Burners OB72

OB96WG for 96" Burners OB96

Fire Stands

Completely portable and stand-alone, the Barbara Jean Fire Stand is perfect for any outdoor space, season or occasion. Gather friends and family around a mesmerizing ribbon of fire and enjoy every occasion outdoors. Three sizes plus a variety of ember glass, driftwood logs, decorative stones and rock options ensure you create the look you want.



A

OFS48MAPT
Fire Stand Linear Burner (Manual/Propane)
MQG5C Glass Media (Bronze x4)
MQSTONE10 Decorative Stones (10 pc set x2)
OB48WG Wind Guard

B

OFS48MAPT
Fire Stand Linear Burner (Manual/Propane)
MQG5C Glass Media (Bronze x4)
OB48WG Wind Guard

C

OFS48MAPT
Fire Stand Linear Burner (Manual/Propane)
MQG5C Glass Media (Bronze x4)
MQSTONE10 Decorative Stones (10 pc set x2)

Fire Stand Specifications

Certified for USA and Canada: Outdoor Decorative Gas Appliance.

Fire Stand Sizes

24"

Fire Stand with
24" Linear Burner

OFS24MAPT
Manual Valve Propane*
with Spark Igniter
(41,000 BTU)

Dimensions

A	30 5/8"
B	12 13/16"
C	8 3/16"
D	26"
E	24"
F	7 1/2"
G	2 1/4"
H	6 1 1/16"
I	28 1/4"
J	23 5/16"
K	1 1/2"
L	2 1/2"
M	1 3/16"
N	3/4"
O	9 13/16"
P	4 3/16"
Q	1 3/4"

36"

Fire Stand with
36" Linear Burner

OFS36MAPT
Manual Valve Propane*
with Spark Igniter
(60,000 BTU)

Dimensions

A	42 5/8"
B	12 13/16"
C	8 3/16"
D	38"
E	36"
F	7 1/2"
G	2 1/4"
H	6 1 1/16"
I	40 1/4"
J	35 5/16"
K	1 1/2"
L	2 1/2"
M	1 3/16"
N	3/4"
O	9 13/16"
P	4 3/16"
Q	1 3/4"

48"

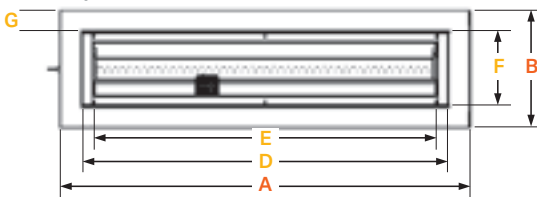
Fire Stand with
48" Linear Burner

OFS48MAPT
Manual Valve Propane*
with Spark Igniter
(60,500 BTU)

Dimensions

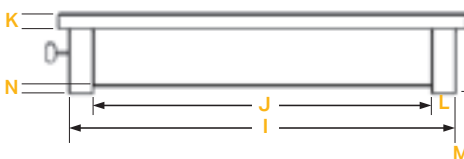
A	54 5/8"
B	12 13/16"
C	8 3/16"
D	50"
E	48"
F	7 1/2"
G	2 1/4"
H	6 1 1/16"
I	52 1/4"
J	47 5/16"
K	1 1/2"
L	2 1/2"
M	1 3/16"
N	3/4"
O	9 13/16"
P	4 3/16"
Q	1 3/4"

Top View

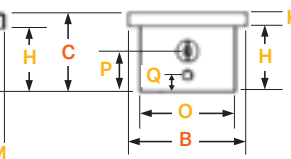


*Propane Fire Stands includes 10 ft. Hose and Regulator and natural gas conversion orifice.

Side View



End View



Glass Media Options

Tables include Bronze Glass. 5 lbs per foot of burner (ie: 24" burner = 10 lbs)



MQG5A
1/2" Cobalt Blue
5 lbs



MQG5W
1/2" White
5 lbs



MQG5C
1/2" Bronze
5 lbs



MQG5B
1/2" Black
5 lbs



MQG5ZG
Zircon Glacier Ice
5 lbs



Wind Guard Recommended

5 1/2" H (4 pc set)

OB24WG for 24" Burners OB24
OB36WG for 36" Burners OB36
OB48WG for 48" Burners OB48

Linear Fireplaces

Dramatically change the look and feel of your patio with the sleek, clean-view style of the Barbara Jean Collection Outdoor Linear Fireplace. Choose from a single sided or see-through option and three sizes to suit your outdoor space. Bringing your vision to life is simple with accents of ember glass, driftwood logs, and decorative stones and rocks.



OFP7972S1N
Outdoor Linear Gas Fireplace
(Single Sided – Millivolt/Natural Gas)
MQG5C Glass Media (Bronze x6)
MQRBD3 Log Set (Driftwood 5 pc set)
MQSTONE Decorative Stones



Linear Fireplaces

OFP7972S2N

Outdoor Linear Fireplace
(See Through – Millivolt/Natural Gas)
MQG5C Glass Media (Bronze x6)
OFP79SS Stainless Steel Surround



OFP5548S1N

Outdoor Linear Gas Fireplace
(Single Sided – Millivolt/Natural Gas)
MQG5C Glass Media (Bronze x4)
RBCB1 Cannonballs (Assorted 14 pc set)
OFP79SS Stainless Steel Surround



Linear Fireplace Specifications

Certified for USA and Canada: Outdoor Decorative Gas Appliance.

Linear Fireplace Sizes

36"

OFP4336S1N
Linear Fireplace
Single Side

OFP4336S2N
Linear Fireplace
See Through

Millivolt Valve
with Piezo Igniter
Natural Gas
60,000 BTU

36OB-CKLP
Propane Conversion

OFP4336S1P2
Linear Fireplace
Single Side

OFP4336S2P2
Linear Fireplace
See Through

IPI PF2
*with multi-color
LED accent lighting*
Natural Gas
60,000 BTU

36OB-CKLP2
Propane Conversion

48"

OFP5548S1N
Linear Fireplace
Single Side

OFP5548S2N
Linear Fireplace
See Through

Millivolt Valve
with Piezo Igniter
Natural Gas
80,000 BTU

48OB-CKLP
Propane Conversion

OFP5548S1P2
Linear Fireplace
Single Side

OFP5548S2P2
Linear Fireplace
See Through

IPI PF2
*with multi-color
LED accent lighting*
Natural Gas
80,000 BTU

48OB-CKLP2
Propane Conversion

72"

OFP7972S1N
Linear Fireplace
Single Side

OFP7972S2N
Linear Fireplace
See Through

Millivolt Valve
with Piezo Igniter
Natural Gas
120,000 BTU

72OB-CKLP
Propane Conversion

OFP7972S1P2
Linear Fireplace
Single Side

OFP7972S2P2
Linear Fireplace
See Through

IPI PF2
*with multi-color
LED accent lighting*
Natural Gas
117,000 BTU

72OB-CKLP2
Propane Conversion

Dimensions

OFP4336S1

A 19 1/4"
B 18 1/8"
C 3/4"
D 19 1/16"
E 3/8"
F 57 1/4"
G 5"
H 40 7/16"
I 18 1/8"
J 19 1/4"
K 35 1/2"
L 5"
M 9 9/16"
N 42 15/16"
O 16 5/16"
P 7 1/8"
Q 57 1/4"

OFP4336S2

A 18 7/8"
B 18 1/8"
C 3/8"
D 17 1/16"
E 3/8"
F 57 1/4"
G 35 1/2"
H 18 1/8"
I 18 7/8"
J 9 9/16"
K 42 15/16"
L 16 5/16"
M 7 1/8"
N 57 1/4"

Dimensions

OFP5548S1

A 19 1/4"
B 18 1/8"
C 3/4"
D 19 1/16"
E 3/8"
F 69 1/4"
G 5"
H 40 7/16"
I 18 1/8"
J 19 1/4"
K 35 1/2"
L 5"
M 9 9/16"
N 54 15/16"
O 16 5/16"
P 7 1/8"
Q 69 1/4"

OFP5548S2

A 18 7/8"
B 18 1/8"
C 3/8"
D 17 1/16"
E 3/8"
F 69 1/4"
G 35 1/2"
H 18 1/8"
I 18 7/8"
J 9 9/16"
K 45 15/16"
L 16 5/16"
M 7 1/8"
N 69 1/4"

Dimensions

OFP7972S1

A 19 1/4"
B 18 1/8"
C 3/4"
D 19 1/16"
E 3/8"
F 93 1/4"
G 5"
H 40 7/16"
I 18 1/8"
J 19 1/4"
K 35 1/2"
L 5"
M 9 9/16"
N 78 15/16"
O 16 5/16"
P 7 1/8"
Q 93 1/4"

OFP7972S2

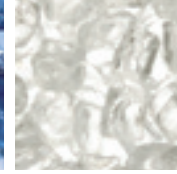
A 18 7/8"
B 18 1/8"
C 3/8"
D 17 1/16"
E 3/8"
F 93 1/4"
G 35 1/2"
H 18 1/8"
I 18 7/8"
J 9 9/16"
K 78 15/16"
L 16 5/16"
M 7 1/8"
N 93 1/4"

Glass Media Required

5 lbs per foot of burner (ie: 24" burner = 10 lbs)



MQG5A
1/2" Cobalt Blue
5 lbs



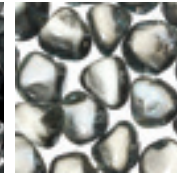
MQG5W
1/2" White
5 lbs



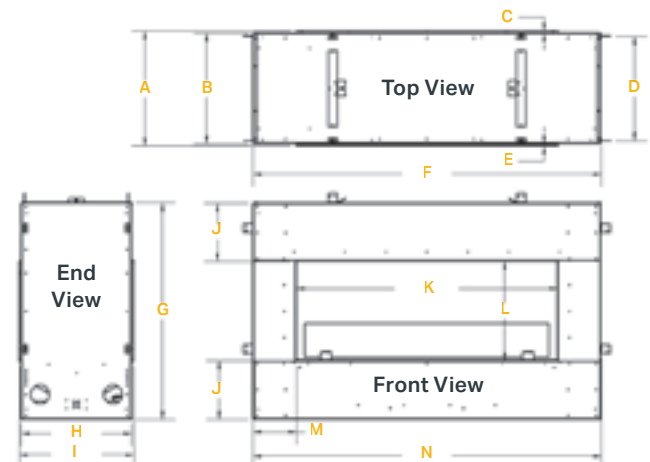
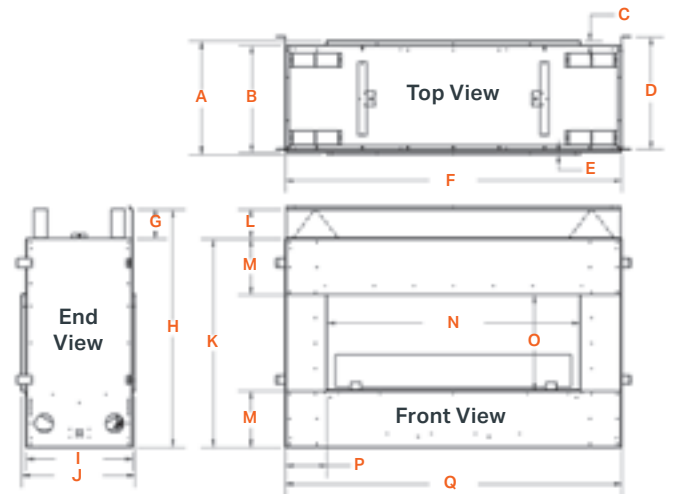
MQG5C
1/2" Bronze
5 lbs



MQG5B
1/2" Black
5 lbs



MQG5ZG
Zircon Glacier Ice
5 lbs



Fire Pits

The Outdoor Fire Pit or Bowl is the perfect way to enhance your enjoyment of any outdoor space. Ideally suited for use on a wood deck or patio, the Outdoor Fire Pit and Bowl come complete with lava rock and are fuelled by either natural gas or propane. Decorate your Outdoor Fire Feature with the choice of decorative stones, or five different colors of crushed glass media.

The Outdoor Fire Pit can be installed on top of wood decks or patios, 24" clearance to side walls. Allow 7 ft. clearance from top of fire bowl to any ceiling.

FP2085LPT
Outdoor Fire Pit (Propane)
FPB30SGT Smooth Grey Concrete Fire Bowl
MQSTONE Decorative Stone x2





Fire Pits



FP2085LPT
Outdoor Fire Pit (Propane)
FPB32TBT Textured Black Fire Bowl
MQSTONES Decorative Stones (x2)

FP2085LPT
Outdoor Fire Pit (Propane)
FPB30SGT Smooth Grey Concrete Fire Bowl
FPB32TRG Trim Ring (Charcoal)



FP2785LPT-FL
Rectangular Outdoor Gas Fire Pit (Propane)
LOGC85 Log Set

Fire Pit Specifications

Certified for USA and Canada: Outdoor Decorative Gas Appliance.

Fire Pit Sizes

ROUND

FP2085NT
Natural Gas
57,000 BTUH

FP2085LPT
Propane
64,000 BTUH

Dimensions
20" Dia. x 4 1/2" H

30" BOWL

FPB30SGT
Smooth Grey

FPB30BTB
Textured Charcoal

Dimensions
30" Dia. x 14" H

Standard Features

RECTANGULAR

FP2785NT*
Natural Gas
57,000 BTUH

FP2785LPT-FL
Propane
64,000 BTUH

Dimensions
20" W x 27" L x 9" H

**NOT STOCKED – order propane model and convert*



FP2785LPT-FL

RECTANGULAR

Propane Fire Pit includes 5 ft. Hose and Regulator (Propane Tank not included)

Lava Rock

Flat Cover

Natural Gas Conversion Orifice

Optional Features

ROUND

Media:

Decorative Ember Glass (Glacier Ice, Cobalt Blue, Black, Bronze, White), Decorative Stones

Log Sets: Oak (LOGC85 or LOGC86)

Fire Bowl Trim Ring:

Charcoal (FPB32TRG)
33 3/4" Dia. x 1 3/8" H

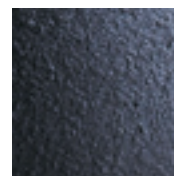
Fire Bowl Cover:

Black (FPB30COVB)

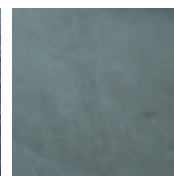
Note for glass media: 5 lbs per foot of burner (ie: 24" burner = 10 lbs)



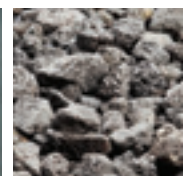
- A** FP2085LPT Round Outdoor Gas Fire Pit (Propane), LOGC86 Log Set
- B** **Optional** Cover for FP2085 FP20COV Table Top Cover (conveniently coversup propane tank when fire pit is in use).
- C** FP2085NT Round Outdoor Gas Fire Pit (Natural Gas), MQSTONES Decorative Stones.
- D** FP2085NT Round Outdoor Gas Fire Pit (Natural Gas), FP20SSRT Stainless Steel Ring.
- E** **Optional** Cover for Fire Bowl FPB30COVB



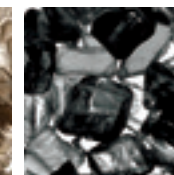
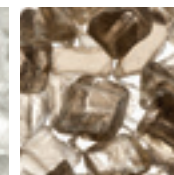
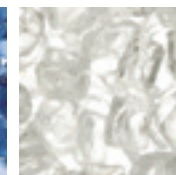
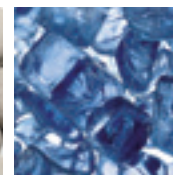
FPB30BTB
Textured Charcoal



FPB30SGT
Smooth Grey



ML41410
Lava Rocks



LOGC86
Oak Log Set
5-piece

MQSTONE
Decorative
Stones

MQG5A
1/2" Cobalt Blue
5 lbs

MQG5W
1/2" White
5 lbs

MQG5C
1/2" Bronze
5 lbs

MQG5B
1/2" Black
5 lbs

MQG5ZG
Zircon Glacier Ice
5 lbs

Fireplaces

Light up your nights. Designed for your outdoor oasis, this fireplace captures your attention with its Satin Coat Black or Stainless Steel Finish and your choice of brick liner. Looks like the stars in the sky now have a little competition.



OFFP42NS
Outdoor Fireplace (Natural Gas)
LOGF36 Split Oak Log Set
OFFP42RLH Herringbone Brick Liner



Fireplaces



OFP42N
Outdoor Fireplace (Natural Gas)
LOGF36 Split Oak Log Set
OFP42RLT Traditional Brick Liner



OFP42NS
Outdoor Fireplace (Natural Gas)
LOGF36 Split Oak Log Set
OFP42RLH Herringbone Brick Liner

Fireplace Specifications

Certified for USA and Canada: Outdoor Decorative Gas Appliance.

Fireplace Sizes

NATURAL GAS

OFP42N/NE-BLACK
OFP42NS/NSE-STAINLESS

Input Max: 55,000 BTU
Input Min: 38,000 BTU

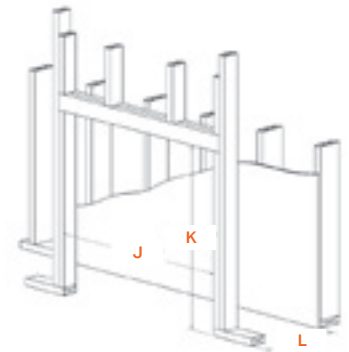
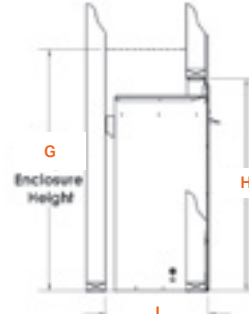
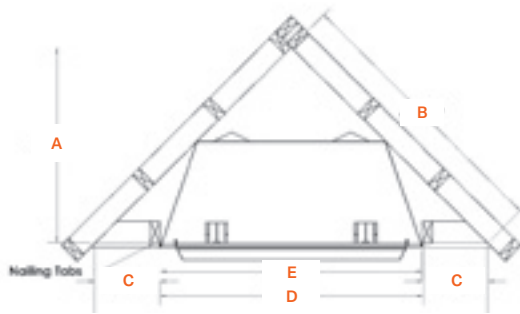
PROPANE

OFP42LP/LPE-BLACK
OFP42LPS/LPSE-STAINLESS

Input Max: 55,000 BTU
Input Min: 44,000 BTU

Dimensions

- A 31 1/2"
- B 44 1/2"
- C 10 3/8"
- D 42 1/8"
- E 41 7/8"
- G 43 1/2" min.
- H 38 1/4"
- I 18 1/2"
- J 42 1/8"
- K 38 1/4"
- L 18 1/2"



Standard Features

Millivolt or IPI PF1 valve system with hi/low heat and flame adjustment

A flame sensor that constantly monitors the pilot flame and provides 100% gas shut off if pilot is not sensed

Stainless steel pull screen

Lava rock

Optional Features

Surround: Stainless steel

Refractory Liner: Traditional and Herringbone

Spark Assist: Battery operated pilot burner ignitor (*millivolt only*)

Weather Cover: Stainless steel or black

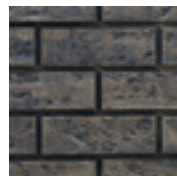
Media Options



LOGF37*
Log Set (Oak)



SURROUND
Stainless



OFP42RLT
Brick Liner
(Traditional)



OFP42RLH
Brick Liner
(Herringbone)

*Ordered Separately

Screened Porch Installation Guidelines

- Porch Area – 96 sq. ft.
- Ceiling Height – 92"
- A minimum of two walls can be screened but must be open to outside ventilation:
Minimum Screen Height – 78"
Screen Area – 64 sq. ft

Refer to installation manual for additional details of framing specifications and clearances.

Accessories

The beauty of Barbara Jean Collection is that you can fully customize the look of your unit. Choose convenient accessories and designer options that range from classic driftwood logs to a more contemporary style of ember glass or rocks. Whatever you choose, you'll find the quality and unique style we're certain you'll warm up to.

Optional Accessories



MQRBD3
Log Set: Driftwood
(5 pc)



MQRBD4
Log Set: Driftwood
(3 pc)



MQROCK2
Rock Set: Contemporary
(Natural)



RBCB1
Cannonballs: Assorted
size and colors (14 pc)



MQSTONE
Decorative Stones
(80 pc)



MQSTONE10
Decorative Stones
(10 pc)



OFP42SA
Spark Assist for
Millivolt Valve
(AA Battery not
included)



OBUVM
Universal Valve Bracket
Mount (for Custom
Applications)

Optional Weather Covers for Linear Fireplaces

OFP43WC Stainless Steel

OFP55WC Stainless Steel

OFP79WC Stainless Steel

Optional Surround for Linear Fireplaces



Stainless Steel Surrounds

OFP43SS / OFP55SS / OFP79SS

Wind Guards Recommended for Burners

Replacement Weather Covers for Fire Tables



OB24WWC for Wide 24" tables

OB36WWC for Wide 36" tables

OB48WWC for Wide 48" tables

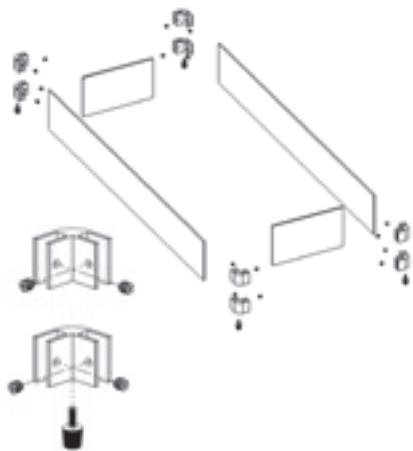
OB24WG
for 24" Burners OB24 (4 pc set)

OB36WG
for 36" Burners OB36 (4 pc set)

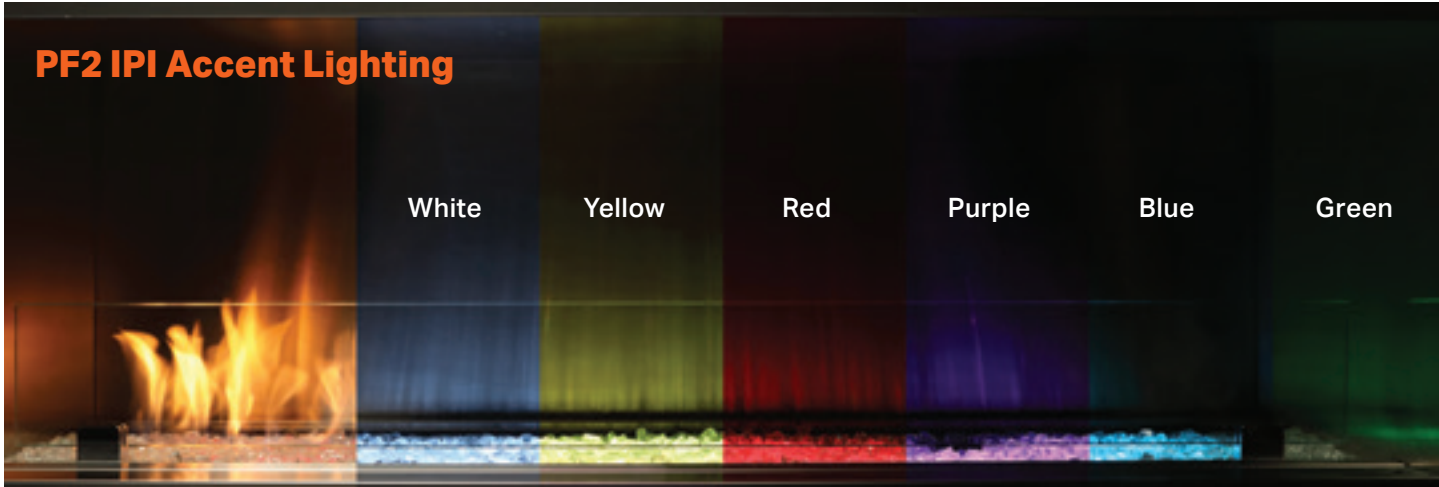
OB48WG
for 48" Burners OB48 (4 pc set)

OB72WG
for 72" Burners OB72 (4 pc set)

Wind Guard: 5 1/2"H



PF2 IPI Accent Lighting



White

Yellow

Red

Purple

Blue

Green

Barbara Jean

· OUTDOOR ·
FIRE COLLECTION



Intertek
4000720

The Barbara Jean Collection maintains a program of continuous testing, refinement and improvements of all its products. Some aspect of units shown here may be changed at any time without notice or obligation.

Certification: Certified for USA and Canada:
Outdoor Decorative Gas Appliances.

*Components may have to be ordered separately to create a complete unit. Discuss with your local Dealer for clarification.

Printed in Canada | B0500 | 03/2025



Limited Warranty

The OB Series burner is warrantied against defects for five years. All other components such as gas valves, thermocouples, igniters, lights and media are warrantied against defects for one year.

The FP2085/2785 is warrantied against defects for one year.



Crafted entirely in Canada, each Barbara Jean unit is built to the highest standards and made to last.



FOR CALIFORNIA RESIDENTS ONLY:

WARNING! This product can expose you to chemicals including Carbon Monoxide, that is an externally vented by-product of fuel consumption, which is [are] known to the State of California to cause birth defects or other reproductive harm. For more information, visit www.P65Warnings.ca.gov.

2340 Logan Ave.
Winnipeg, Manitoba
Canada R2R 2V3

Phone: 204.632.1962
Fax: 204.632.1960

BarbaraJeanCollection.com